

2019

Trauma and Critical Care Conference



Target Audience:

This conference is intended for nurses and EMS personnel who frequently manage victims of trauma and critical illness.

Accreditation:

San Juan Regional Medical Center is an approved provider of continuing education by the New Mexico Nurses Association, an accredited approver by the American Nurses Credentialing Center's Commission on Accreditation. Continuing education for nursing and EMS personnel will be available online with the completion of the evaluation. Contact hours pending approval.



DUN #030434567

EIN #850127924

Registration

Register online at sanjuanregional.com/trauma. Hospital employees can register on HealthStream. Call 505.609.6286 for more information.

Fees

Trauma and Critical Care Conference Fee:
\$250.00

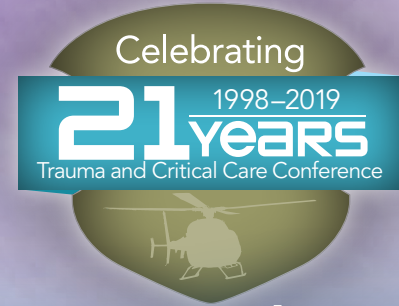


SAN JUAN REGIONAL
MEDICAL CENTER

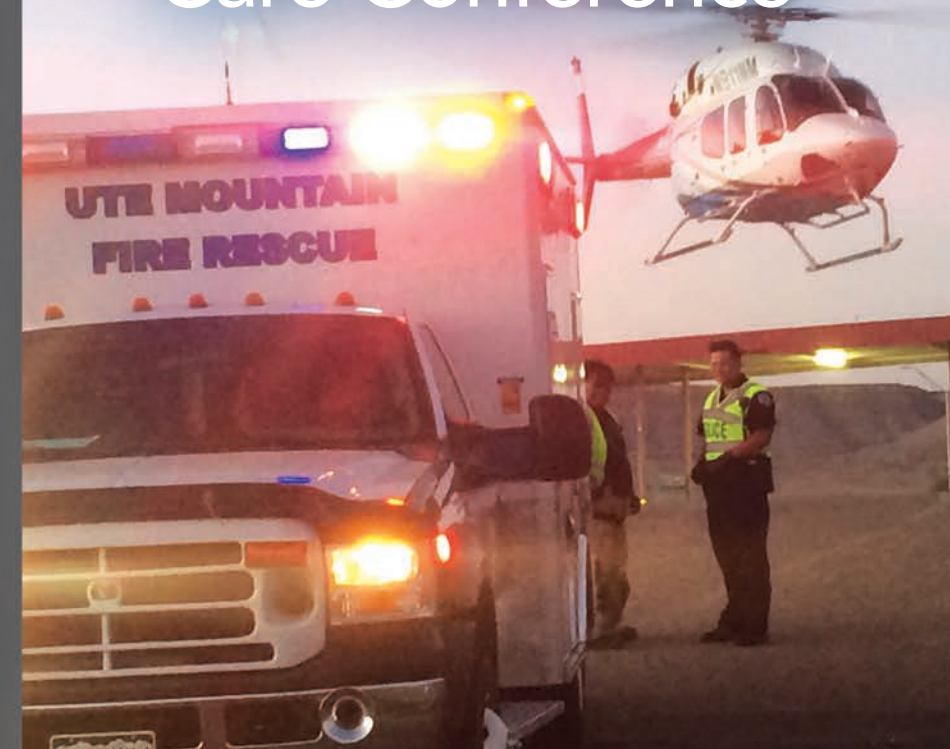
801 West Maple Street
Farmington, New Mexico 87401
sanjuanregional.com



Non-Profit Org.
U. S. Postage
PAID
Permit #2
Farmington, NM



Trauma and Critical Care Conference



February 28 – March 1, 2019

This conference is presented by
San Juan Regional Medical Center



SAN JUAN REGIONAL
MEDICAL CENTER

sanjuanregional.com/trauma

Trauma and Critical Care Conference February 28 – March 1, 2019



We have an exciting lineup of speakers and topics planned over the two day schedule for the 2019 Trauma Conference. San Juan Regional Medical Center employees can register on HealthStream. Non-employees can register at www.sanjuanregional.com/trauma. This year's conference will be held at Pinon Hills Community Church located at 5101 North Dustin Avenue in Farmington, New Mexico.



Pre-Conference Agenda

Advanced Burn Life Support (ABLS)

Wednesday February 27, 2019 | 0800 – 1700

\$250 Collected at the door (employees and non-employees)

Registration: sanjuanregional.com or Health Stream for employees

Advanced Burn Life Support (ABLS) programs provide knowledge for immediate care of the burn patient up to the first 24-hours post injury. ABLS programs also support emergency preparedness and mass casualty incidents focusing on triage, burn survivability, prioritizing transport of patients, and patient treatment. ABLS is available for a wide range of burn care professionals.

Pinon Hills Community Church
5101 North Dustin Avenue | Farmington, New Mexico

Conference Agenda Thursday, February 28, 2019

0700 – 0800 REGISTRATION

0800 – 0810 WELCOME

Dr. Brad Campbell

0810 – 0840 Burn Questions in Burn Care

*Anne Wagner, MD, FACS, Burn Center Medical Director,
Associate Professor of Surgery, University of Colorado School of Medicine*

0840 – 0910 Burn Questions in Burn Care (Continued)

*Anne Wagner, MD, FACS, Burn Center Medical Director,
Associate Professor of Surgery, University of Colorado School of Medicine*

0910 – 0920 BREAK

0920 – 1020 Resiliency and Burnout

*Jason Roosa, MD, MS, FACEP, FAEMS, EMS Medical Director Lutheran and
Good Samaritan Medical Centers, Wheat Ridge and Lafayette, Colorado;
Medical Director US Department of Energy Office of Secure Transportation and
numerous fire departments*

1020 – 1030 BREAK

1030 – 1130 Resiliency and Burnout (Continued)

Jason Roosa, MD, MS, FACEP, FAEMS

**1130 – 1245 LUNCH – International Emergency Medical Response
to Sudden Onset Disasters and Outbreaks**

Nick Mrzlak, Team Rubicon Incident Management Team Chief

1245 – 1345 Aztec High School Shooting

Captain J. Price Current, San Juan County Sheriff's Office

1345 – 1415 Impella Device

Andrew Jones, RN, BSN, ABIOMED Clinical Consultant

1415 – 1430 BREAK

1430 – 1530 Pediatric Respiratory Illness, RSI and High Flow O₂

Bradley Scoggins, DO, FAPP

1530 – 1600 Sepsis

Angela Bell, MD – SJRMC ED physician

**1600 – 1700 Burns and Reconstruction – Healing
Through Reconstruction**

*Lily Daniali, MD, Adult and Pediatric Hand, Peripheral Nerve, Craniofacial,
Microvascular, Plastic and Reconstructive Surgeon, Swedish Medical Center*



Conference Agenda

Friday, March 1, 2019

0730 – 0800 REGISTRATION

0800 – 0810 WELCOME

Dr. Brad Campbell

0810 – 0910 What's New in Pediatric Trauma

Presented by Swedish Medical Center

0910 – 0920 BREAK

0920 – 1020 Trauma Topics

Jarrad Maiers, MD, FACEP, SJRMC Emergency Department

1020 – 1030 BREAK

1030 – 1130 Hypotension During Intubation

*Richard Durkee, MSN, CEN, CPEN, TCRN, NREMT, Clinical Nurse Educator
for Everett Hospital Cambridge Health Alliance), Boston, MA.*

1130 – 1230 Trauma Triage

Richard Durkee

1330 – 1700 Skills Challenge Escape Room

Staff

Trauma: The Great Escape

Description: Join a team of EMT and nursing peers to escape a locked room and prove that you are Trauma Masterminds. Come together with teamwork and knowledge to find clues and solve skills to complete your adrenaline-fueled mission.